

A Handbook to Assist with Planning for Extreme Climate Events When You Have Contaminated Sites and Waste Facilities in Your Community



epa.gov/research



Innovative Science for a Sustainable Future

A FREE AND PRACTICAL RESOURCE TO HELP YOU PRIORITIZE RESOURCES AND ACTIONS

Any community facing worsening climate-related events such as extreme heat, floods, droughts, and wildfires has many planning needs. Contaminated sites or waste management facilities in your community that may release contaminants during or after events can add complication to planning.

You now can download ***Handbook on Indicators of Community Vulnerability to Extreme Events: Considering Sites and Waste Management Facilities***, an extensive resource to assist with your

planning. This handbook features a systematic framework (Figure 1) for considering which indicators are appropriate for your planning as well as a step-by-step process for computing, mapping and applying indicators. Using the framework and indicators can help your community focus resources and actions that are grounded in evidence and based on a shared, comprehensive set of considerations.

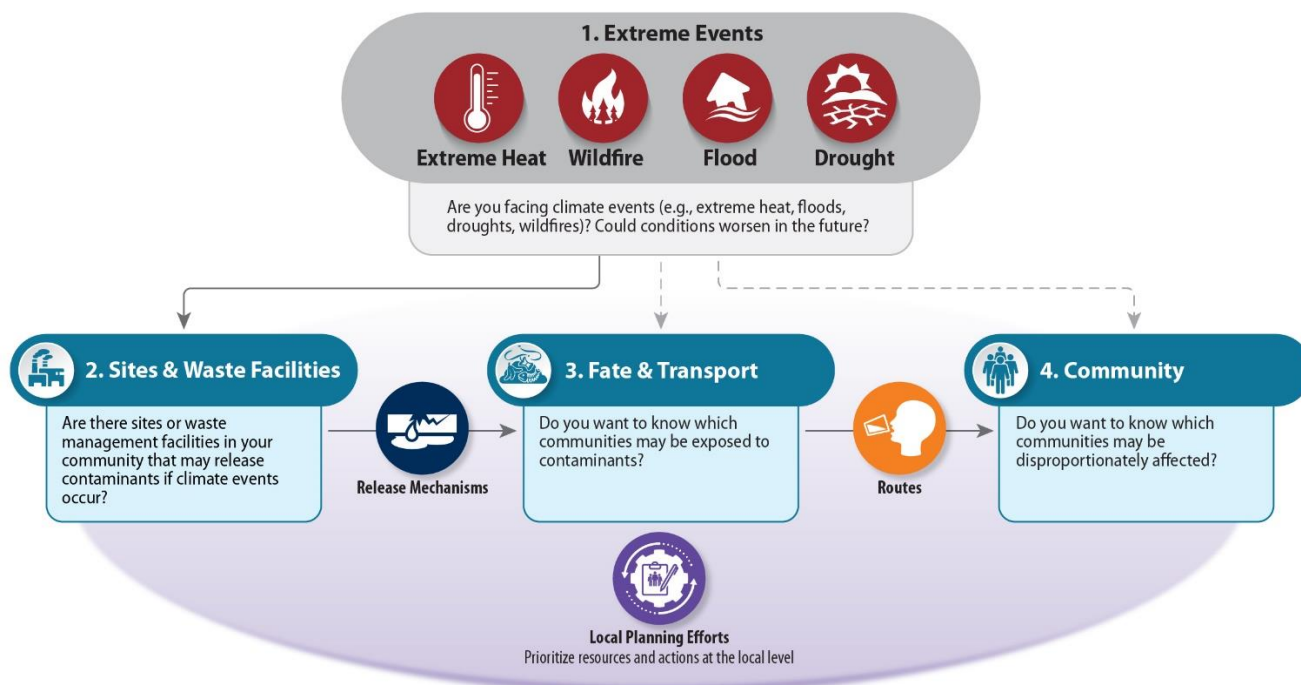


Figure 1. Planning Framework. Extreme events (Box 1) increase the risk of contaminant release from sites/waste facilities (Box 2), which are then transported via air and water (Box 3) potentially exposing nearby communities. Impacts may be higher for community populations who are more sensitive (Box 4). Mappable indicators representing each of these four boxes can help address your planning needs. Note that other impacts (shown by the dotted arrows) are not considered in the handbook.

Connect with us Online



How can the framework and indicators help you?

Apply approach to assess cumulative impacts from different types of sites

- Identify communities that may suffer the highest impacts to improve adaptation plans, emergency preparedness and response strategies
- Track contaminated sites and waste facilities for environmental assessment, cleanup, maintenance, adaptation, and response
- Communicate how extreme events may impact contaminated sites and waste facilities and surrounding community

Tailor approach for planning activities in communities with Brownfield sites

- Identify and prioritize Brownfields communities disproportionately affected
- Prioritize assessment and cleanup of Brownfield sites
- Evaluate Brownfields reuse options under current and future conditions
- Track success of revitalization and inform future redevelopment

Handbook contents

- Context and scope
- Description of a planning framework and relevant community indicators
- A 4-step approach for implementing the framework in planning:
 - Define
 - Identify
 - Measure
 - Communicate
- An illustrative example: Flooding
- Stand-alone checklists for calculation and mapping

How can you engage and involve your colleagues and community?

- Share this handbook with planners and decision-makers (local, city, tribes, state, regions), technical advisors to decision-makers, researchers, environmental advocates, and community organizations
- Apply and adapt the approach to suit your community needs

For more information, contact:

- Meridith Fry (Fry.Meridith@epa.gov)
- Susan Julius (Julius.Susan@epa.gov)
- Paramita Sinha (psinha@rti.org)